



19 St. Marks Road, Preston, PR1 8TL
£750 PCM

Located within the beautiful converted St Mark's Church, this spacious and unique second-floor apartment is available to rent immediately. The apartment boasts many original features whilst still offering a modern and stylish living space. It briefly comprises a large living room with mezzanine study, 2 double bedrooms, bathroom with 3-piece white suite and modern kitchen with integrated electric hob and oven.

This stunning apartment includes built-in storage in both bedrooms as well as on the mezzanine study and parking spaces for residents are available outside the building. The apartment affords charming views over Preston centre and is well positioned for travelling into the city. Close to all major transport routes and with excellent local public transport this property is ideal for commuters who want to live somewhere a bit more tranquil than a bustling city centre.

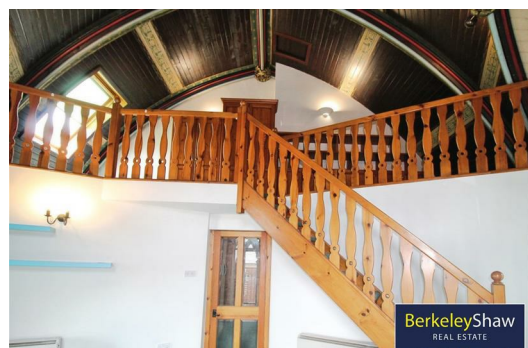
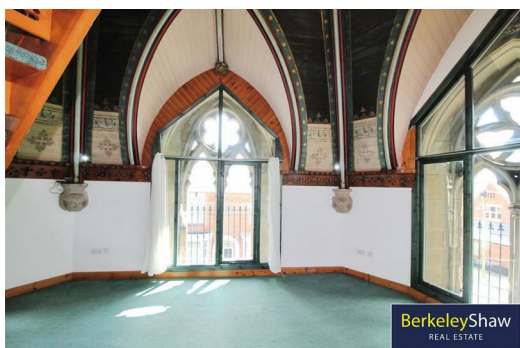
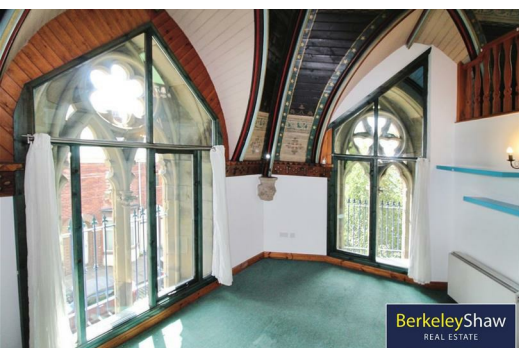
We are expecting high levels of interest in this property so get in touch as soon as possible to arrange a viewing.

Council tax band D

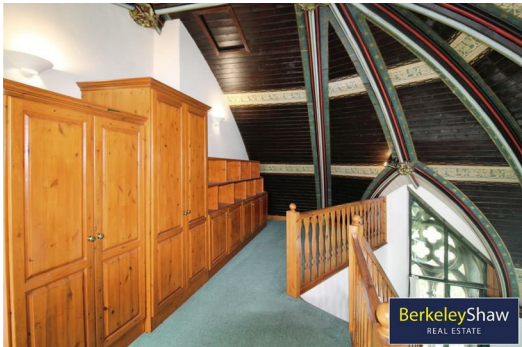
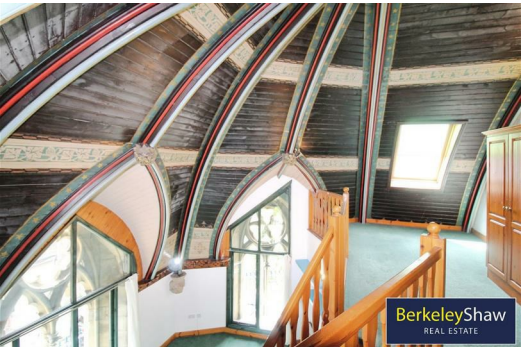
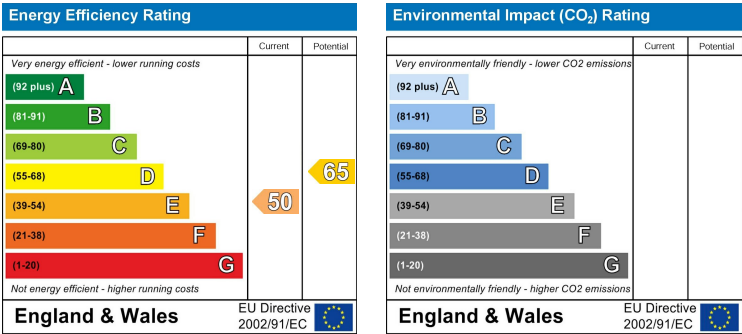
EPC grade E

Minimum tenancy term 12 months

Tenancy deposit £750



- External
- Lounge
- Bathroom
- Kitchen
- Bedroom 1
- Bedroom 2
- Mezzanine



Berkeley Shaw Estate Agents Limited.
Company No. 0784754

Berkeley Shaw Real Estate Limited.
Company No. 05206927

